

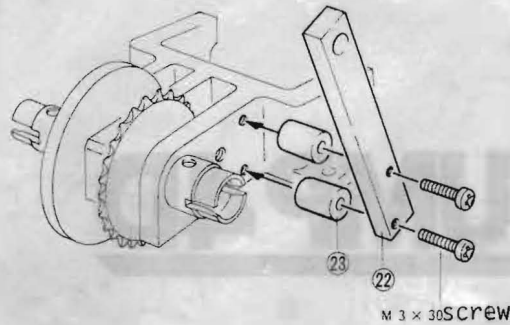


LAND JUMP 4D

SUPPLEMENTARY INSTRUCTION



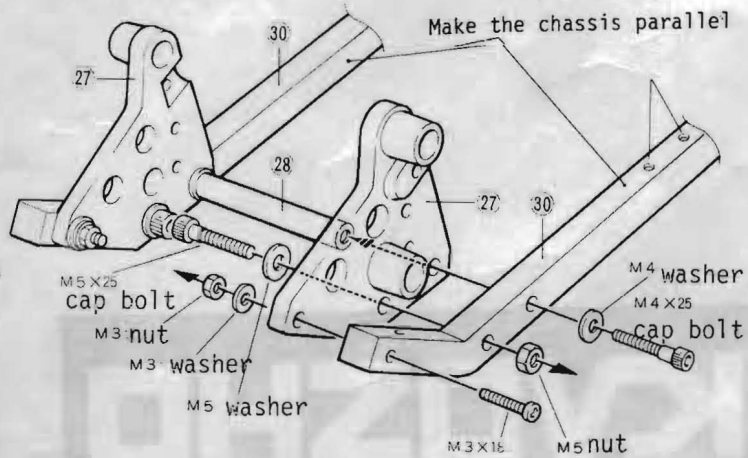
10



10 Install collar 23 together with muffler installation bracket 22.

12

no.12-16 parts in front B bag

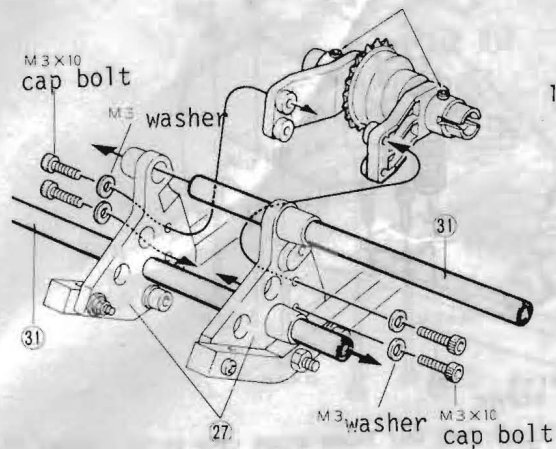


[Small parts used in steps 12 - 16 are included in front part (B) bag.]

12 Install onto main chassis 30 front axle mount 27, joint collar 28, front arm axle A 29 as illustrated.

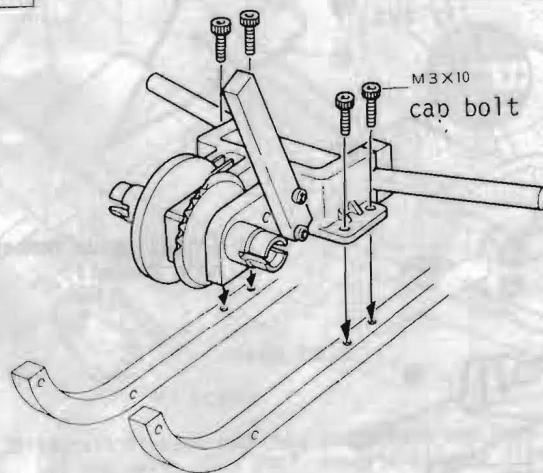
13

Loosen up once and after setting in place has been finished, tighten so there will not be too much play on both side.



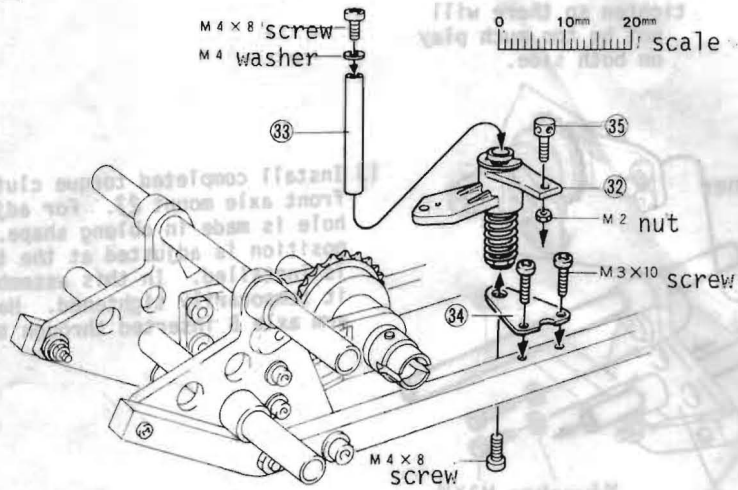
13 Install completed torque clutch part onto front axle mount 27. For adjusting, the hole is made in oblong shape. The correct position is adjusted at the time the chain is installed. In this assembly step, have it temporarily tightened. Have the front arm axle B inserted through the mount.

14



14 Install completed rear axle part onto the chassis.

15



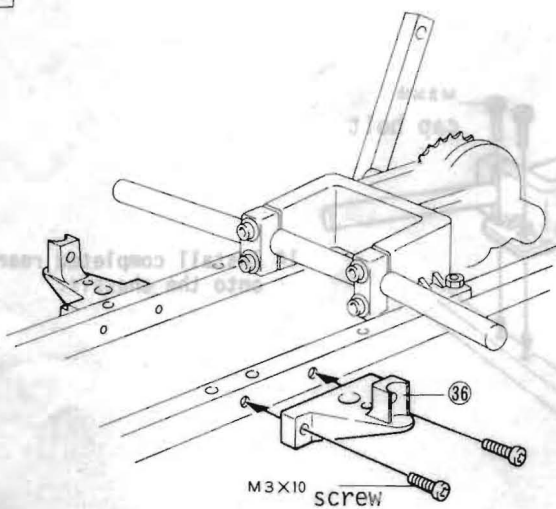
15 Install linkage guide 35 onto servo saver 32 it will move freely. Next install servo saver 32 onto servo saver installation hardware 34 and then onto the chassis.

31

31 Install servo box 28 onto boots ring as illustrated in plate 15.

Please disassemble and refer to...

16

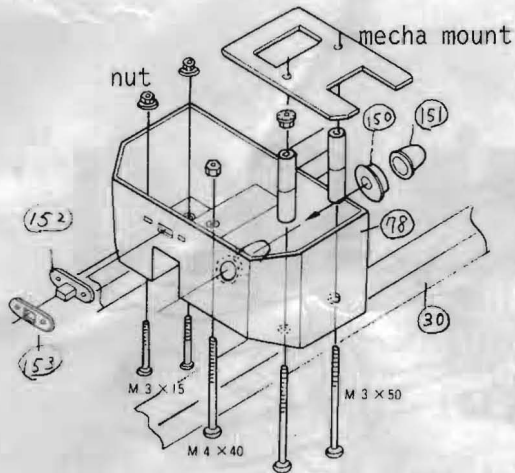


16 Install side member 36 onto main chassis.

37

37 Install set th...

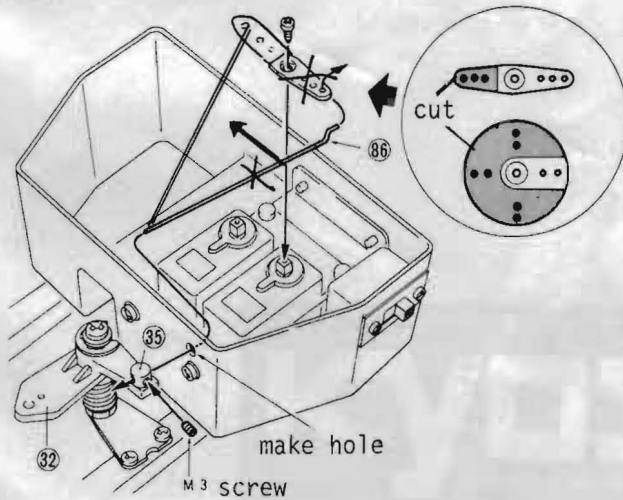
31



31 Install servo onto mecha mount and then install mecha box 78 onto chassis 30. Cement rod boots 151 to rod boots ring 150 and cement rod boots to mecha box hole as illustrated. Install switch boots 152 and switch plate 153 to mecha box with switch.

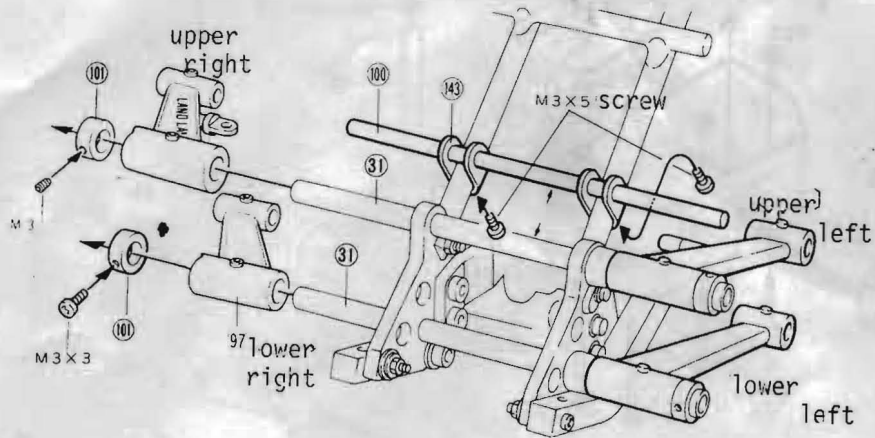
Please disregard No. 31, 32, 33, 34 & 36 in the instruction and refer above drawing No. 31.

37



37 Install linkage rod onto servo horn and then set the servo horn 180° reverse side as illustrated.

de member 36 onto
is.



44 Making sure of top right and top left sides of the front suspension arm that was assembled in step 43, set the arms into place as illustrated. Set 101 stopper into place to the point that it does not have excess play and make so that suspension arm will move up and down smoothly.